

## ARTICULATED TRUCK MOUNTED PLATFORMS

# SPECIFICATION

## ZED 26 JH on Atego 7,5 t



**Baier  
Mietservice**

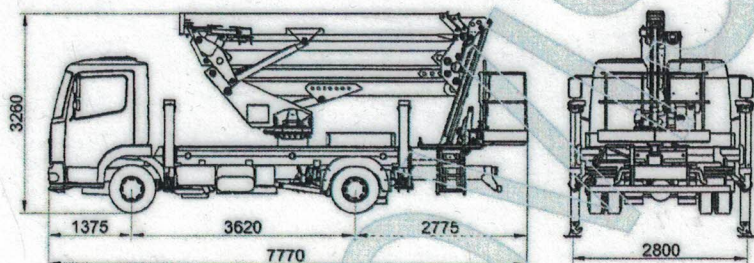
GABELSTAPLER • TELESKOPSTAPLER • ARBEITSBÜHNEN

☎ **07631 749497**

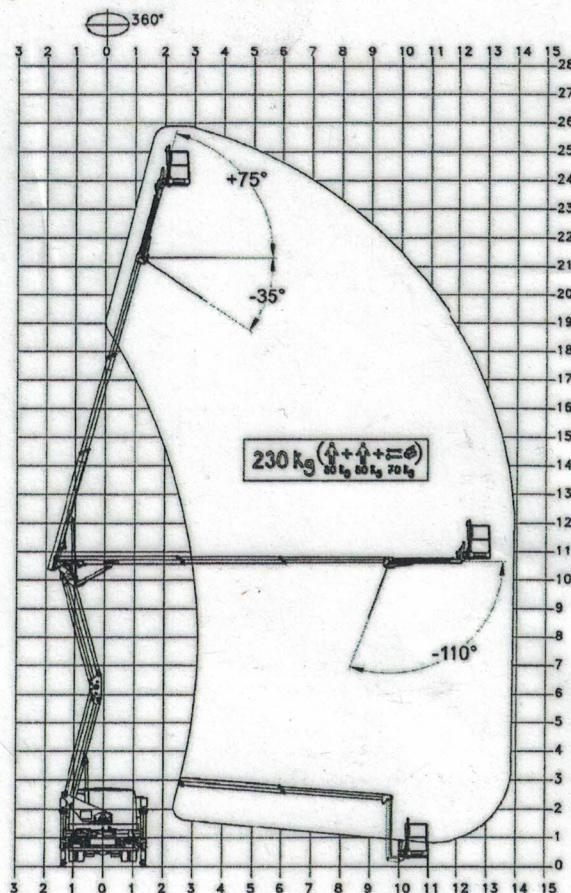
### TECHNICAL DATA

- Double pantograph + telescopic boom (main boom + two extensions)+ jib
- Sigma boom movement enabled by connecting rods
- 360° continuous turret rotation on bearing turtable
- Proportional, electrohydraulic controls in basket
- Engine start and stop controls from basket
- Anti-slip, aluminium flatbed decking with tool tray walls
- Aluminium basket
- 65° right + 65° left hydraulic basket rotation
- Automatic hydraulically actioned basket levelling
- Basket load sensing device
- 4 hydraulic outriggers with ground pressure sensors
- Hydraulic system operated by vehicle's PTO
- 230 V AC CE electrical socket in the basket
- 1 flashing beacon
- Buzzer indicating PTO engaged
- Hour meter
- Standard boom colours blue (RAL 5017) or white (RAL 9010)
- CE certified

### DIMENSIONS



### WORKING ENVELOPE



### PERFORMANCE

Arbeitshöhe	26m
Plattformhöhe	24m
max. seitl. Reichweite	14m
Tragkraft	230 kg
Plattformaumaße	1800x700x1100 mm
Gesamtgewicht	7,5t

CTE S.p.A. | [www.ctelift.com](http://www.ctelift.com)

Sales Office Dato (Vt) - [dato@ctelift.com](mailto:dato@ctelift.com)  
 ph. +39 04151.00.130 - fax +39 041 41.38.44  
 Headquarter Rovereto (TN) - [info@ctelift.com](mailto:info@ctelift.com)  
 ph. +39 0464 48.50.50 - fax +39 0464 48.50.99  
 Milano Branch S. Giuliano Milanese (MI) - [milano@ctelift.com](mailto:milano@ctelift.com)  
 ph. +39 02 98.61.100 - fax +39 02 98.28.20.96  
 Bertinoro Branch & Factory (FC) - [bertinoro@ctelift.com](mailto:bertinoro@ctelift.com)  
 ph. +39 0543 44.88.30 - fax +39 0543 44.83.43

**BAIER  
Mietservice**  
 Otto-Hahn-Str. 3  
 79395 Neuenburg  
 Tel.: 07631 749497  
 Fax.: 07631 749523

